

Colour Standards

The Tasmanian Buckskins Inc registers horses according to their individual colour eligibility, regardless if breeding is known or not.

The society holds three registries..

1. General
2. Appendix
3. Foundation

When applying for registration for Tas Buckskins inc you have 2 options..

1. to send 5 clear non digital photographs of the horse for all angles & completed paperwork & each horse will be assessed from the photographs, if there is an issue you will then be asked to present it for physical classification at a cost of \$10.
2. To come along to a classification day usually held the day before the state show & have your horse physically classified & the classifiers will complete the paperwork & do the photographs.

You will have to show proof of ownership, or if the animal is registered with another society a copy of that paperwork is required. To register a stallion you will also have to have a vet check for suitability for breeding purposes & soundness if they are not already registered with another society.

The Registries...

The **General Registry** is in two age sections Junior 4 yrs & under & Senior over 4 years and then again broken into sexes. This registry covers the three single Dilutes, Buckskins, Duns, & Grulla's & the many colour differences they offer,

The term "Buckskin" covers all the variations/shades/types that occur in the above 3 basic colours.

Buckskin— This unique colour is not a breed but a colour which offers a great wrath of variation.

This dilute colour is formed by pairing the Cremello (cream) gene Ccr with Bay or brown. Depending on how light or dark the foundation colour is (bay or brown) determines the resulting colour of Buckskin. If you cross a double dilute of two cremes the result will be either Perlino or Cremello.—*Taken from Shades of Gold... The Buckskin by Jeanette Gower*

Our society recognises & separates the single dilute coloured Buckskins into 5 categories, Golden, Cream, (silver) Overlay (burnt) Brown & Black.

GOLD—A deep gold colour with a iridescence to the coat. No smutting on body or neck. White markings can be extensive. Mane & tail are usually black or dark brown & white frosting & a dorsal stripe may be present.

L-R -
Olsory Mr Sandman,
Bolden Stallion—Dr H
& J Cooper, Indira,
Mare—N Hodgman,
Greycliffe Wildcard—
Gelding—T Smith



SILVER—Silver/ white colouring with a pale fawn/cream /brown mane & tail, Fawn to light brown leg colouring starts lower down the leg than usual often below the knee. The body colour often has a creamy appearance with a silver iridescence. Frosting will be present on main & tail.

L-R - Xanthe rocco,
Xanthe Wilhelm. I
Petrovski, Ol Passo
Stallion.



CREAM— Off white body colour with a slight golden tint with black/brown points. Often has a dappled body with light sheen. Dorsal stripe can also be present



Left—Al Katar Faith– Cream mare owned by Greycliffe Park
Right—Ooranga Park Diamond Tina Cream mare owned by Dalebrook Lodge



OVERLAY—(also known as sooty, burnt) This diffuse colouring is caused by brown overlay of colour on the base of a golden/cream buckskin. It is a deep & strong colour with very dark legs & main & tail almost resembling sunburnt colouring. This colouring also displays strong dorsal stripe, leg bars, neck shadowing & often a face mask. The body colour often shows a copper iridescence.



L-R Shiranna Irish Crème, Arabian Pony gelding owned by S Shadbolt & D Cowen, Ridgemoore Nursery Rhyme Arabian Pony owned by M Johnston Djemur Leticia Arabian Stockhorse Mare owned by Mel Reid Photos by Matt Bennet.

SOOTY BUCKSKIN— Also known as Brown Buckskin, Is a dilute brown and is very similar to the overlay buckskin but not with the gloss & sheen the overlay coat displays. Brown Buckskins have extreme dark shading of black or brown hairs through out the body and can appear to have a smutty appearance.



Photo of Jessie & satomi

Left—Devine Gun Smoke, Morgan Stallion, Jessie Quarterhorse Mare

BLACK BUCKSKIN—Off black, rusty or slate all over. The dilute black is the darkest member of the buckskin family. To determine if a true black dilute, parting the hair will usually reveal a dark smoky undercoat. Black Buckskins are sometimes very hard to distinguish from a true black, the easiest way is to know background breeding, breed to a solid coloured horse to see if a dilute foal results or to have a genetic dilute dna hair test. A Black buckskin will never be a pure breed type of horse, ie, Arabian, tb etc as they are free of the Ccr gene type. A true Black buckskin is born a pale usually a mouse, fawn or pumpkin colouring & then darkens at first change of coat



DUN—The Dun is a very intense colouring which is formed by the crossing of the dominant dilution “Dd” locus or more commonly known as the DUN GENE, this gene will cause a bay horse to become a dun, a chestnut horse to be a red dun & black & dark brown to be a Grulla or mouse/blue dun. There are many variations of colouring/shades in the dun horse. The Dunning gene is dominant so to be classified as a dun one parent has to be a dun. The dun gene is responsible for lightening out the body colour of the four base colours and leaves primitive (Dun Factors) the same colouring as the mane & tail.



RED DUN— This colour will vary in body shades

Dun Photo credits—http://grullaorgrullo.homestead.com/files/on_grullo_color_5.htm



from reddish tan to a light sandy chestnut colour. Mane & tail & points are a dark brown to light red in variation & must show contrast to the body colour. A dorsal stripe is prominent and other factors may be present but not necessary. Frosting & white socks are accepted.



Whodunnit conclusion quarterhorse

GRULLA (grew-ya) or Grullo. (grew-yo) - Grulla is derived from the Spanish word for a gray crane which is a slate-gray coloured bird. In some areas Grullo is considered the masculine form of definition for the colour, while grulla is considered the feminine definition of the colour. It is pronounced as above, but due to its spelling rarely referred to in proper terms, and is widely accepted as grulla or grullo. The body colour can be mouse, blue, dove or slate coloured, with dark sepia to black points. This colour is flat & has no sheen or gloss, dappling & iridescence is rare as is white markings. They predominantly have strong primitive markings.



Dun Photo credits—http://grullaorgrullo.homestead.com/files/on_grullo_color_5.htm



Primitive Dun Markings—

The other characteristic of the dunning gene is to produce primitive markings or dun factors as they are also known. These markings are Dorsal Stripe, Leg barring, Face mask, Ear tipping & edging, Shoulder strip/shadowing, Neck striping/shadowing, Cob webbing on face, Frosting in mane & tail hairs, Mottling.

DUN FACTOR MARKINGS

distinct dorsal stripe



ear barring & ear tips



shoulder shadow

lower face masks

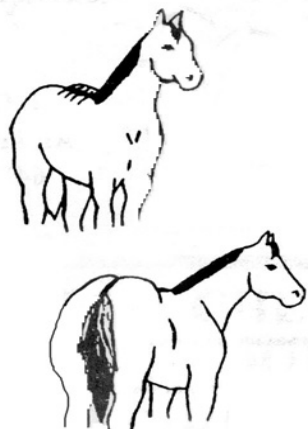
cobwebbing

leg barring

Photo Credits—Sharon Batteate. For above & also leg barring photo. Dun Factors designed by International Buckskins Association.

Dorsal Stripe

The stripe may be black, brown or red and will vary according to body color. The stripe will run along the backbone from the withers to the base of the tail.



At Occasionally the dorsal strip will not run the full length of the backbone. The width of the stripe will vary. The more pronounced the better. Barbs and, or brindle strips off dorsal are desirable.

Cobwebbing on Forehead

Sometimes called "chicken feet", cobwebbing originates under the forelock. Lines extend in varying lengths over the forehead resembling a spider web. Occasionally lines extend from the eye in a misplaced "eyebrow" Penciling may occur completely around the eye.



Ear Tips and or Ear Edges

Ends of ears darker than body color. Ears usually are outlined on the edges.



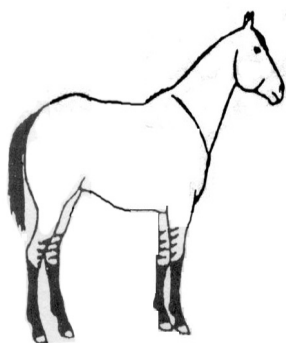
Face Masking

Black, brown, or red shading on the bridge of nose with same color usually around eyes. The masking effect may spread to the jaw and muzzle or be outlined around the lips & nostrils.



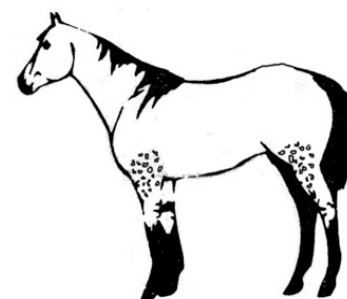
Leg Barring

Horizontal stripes of varying widths that appear across the hocks, inside and front of hind legs, back of forearms and across the knees.

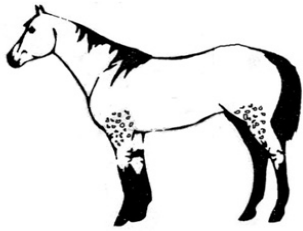


Neck Shadowing

Usually dark areas through the neck extending into the hollow of the shoulder. Occasionally dark shadow will appear only on the crest of the neck or dark lines will point down from the base of the mane.

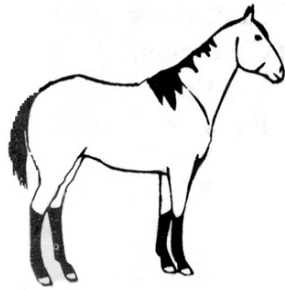


Buckskin shows there is a special judging class for these factors. This class is open to all ages, colours, sexes. No one body



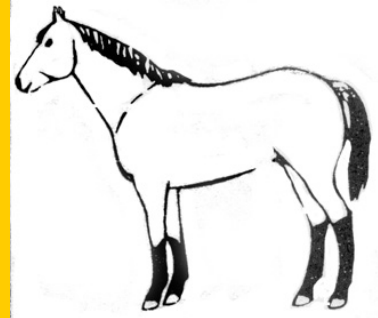
Mottling

This is not to be confused with dapples on a horse's body. Mottling is found on the forearm, gaskins, shoulders, and stifles. It appears as a circular motif in shades darker than the body color. Mottling gives the appearance of "reversed dapples". It is generally not found on the horse's winter coat.



Shoulder Strips or Shadowing

Transverse strip over withers running down from withers in varying widths and lengths. Occasionally more than one stripe is seen in different lengths. In some cases a large shadow effect is seen due to large areas covered or stripes close together, forming the shadow.



Mane and Tail Frosting

White hairs on either side of mane or interspersed throughout mane. In the tail, coarse white hairs appear at the dock of the tail no longer than five or six inches. The frosted hairs may shed during summer months in which case they would reappear during the fall & winter months.

JUDGING CRITEREA For Primitive Dun Marking class..

This class is held at our state show and is only judged by classifier or panel judge. Points are awarded for display-markings & the quality of them. It is an open class for interbred horses/ponies, it does not get divided up into ages, sex or colour. **NO ONE BODY COLOUR IS PREFERRED.** Conformation is to be considered, as not less than

LEG BARRING



more than 20%. Interfering white is defined as white in an area that would interfere with primitive Dun Markings. Points are given out of 3 for each marking. 1 point being for displaying the marking & 1-2 points for the quality of the marking i.e. Very evident, dark, x 2 barring, 1 x ear tipping, frosting on mane & not in tail etc.

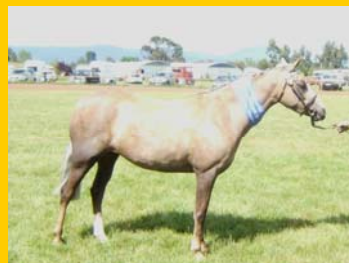
Registry 2— APPENDIX.

For all horses who have a Australian Buckskin Society registered sire or dam which are deemed non dilute are eligible for this progeny register in junior or senior sections. Classes for these progeny horses are always included at shows & they also have their own separate Annual Hi Point Awards.



Registry 3—FOUNDATION

For all originally registered breeding stock i.e. Mares/Stallions who are born buckskin and then turn grey or show signs of other colouring i.e. appaloosa. These horses are still able to breed on their dilute gene.



a
ing
reg-
10%
nor